

Fig. 1. Global primate species richness, distributions, and the percentage of species threatened and with declining populations. Geographic distribution of primate species. Numbers in red by each region refer to the number of extant species present. The bars at the bottom show the percent of species threatened with extinction and the percent of species with declining populations in each region. Percentage of threatened species and percentage of species with declining populations in each region from tables S1 to S4. Geographical range data of living, native species from the IUCN Red List (www.iucnredlist.org) are overlaid onto a 0.5° resolution equal-area grid. In cases in which a species' range was split into multiple subspecies, these were merged to create a range map for the species. Mainland Africa includes small associated islands.

Verbreitung und Bedrohung der nicht-menschlichen Primaten. Bildquelle: Estrada et al. (2016)



Lemuren
(Lemuriformes)
106 Arten



Loriartige
(Lorisiformes)
35 Arten



Koboldmakis
(Tarsiiformes)
11 Arten



Neuweltaffen
(Platyrrhini)
175 Arten



Schlank- und
Stummeltaffen
(Colobinae)
78 Arten



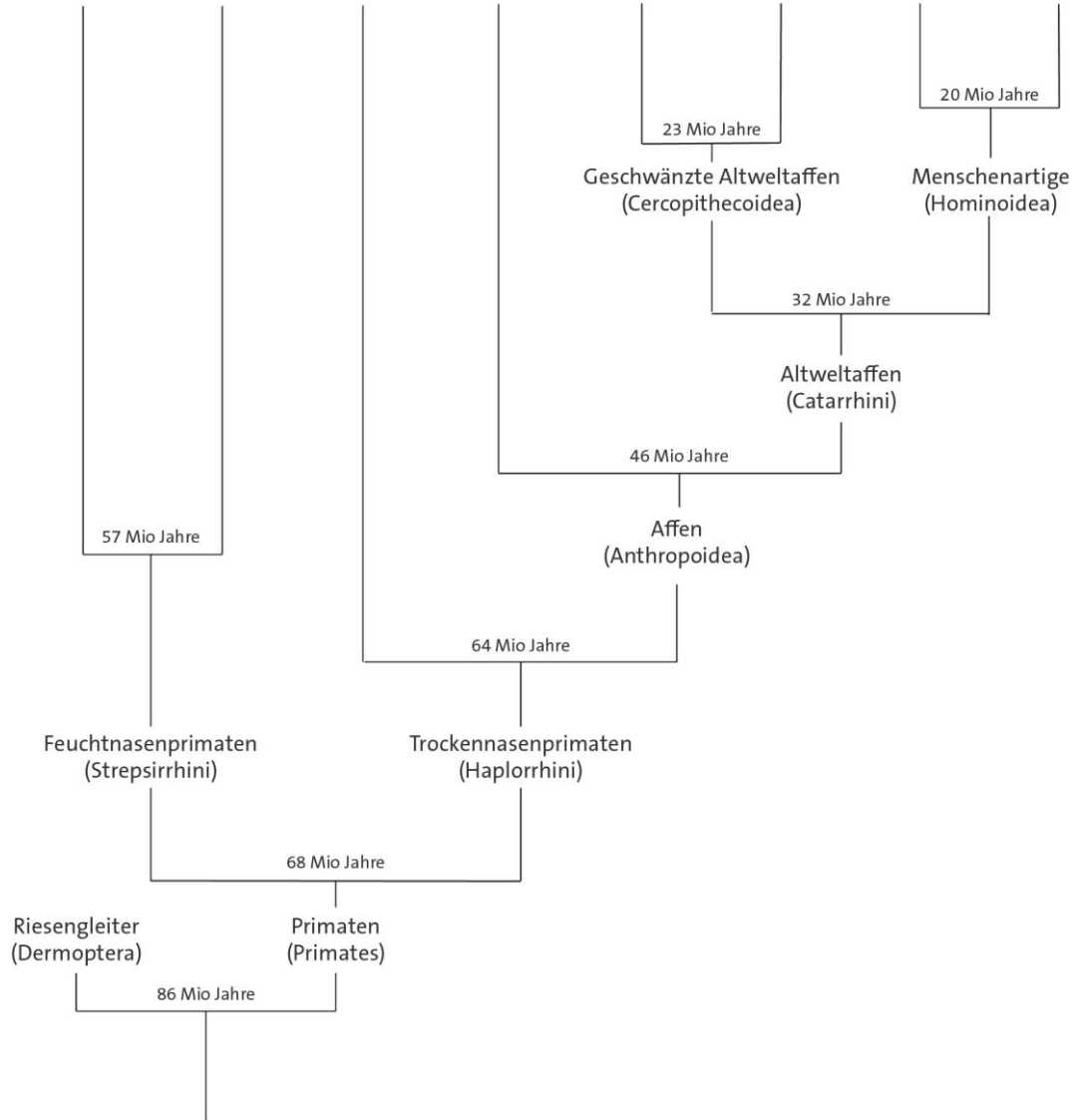
Backentaschenaffen
(Cercopithecoinae)
82 Arten



Gibbons
(Hylobatidae)
20 Arten



Menschenaffen
(Hominidae)
7 Arten



Stammbaum der Primaten. Bildquelle: Deutsches Primatenzentrum. Layout: Luzie Julia Almenräder, Illustration Primaten: Stephen Nash
<https://www.dpz.eu/de/infothek/wissen/primaten/evolution-und-diversitaet-der-primaten.html>